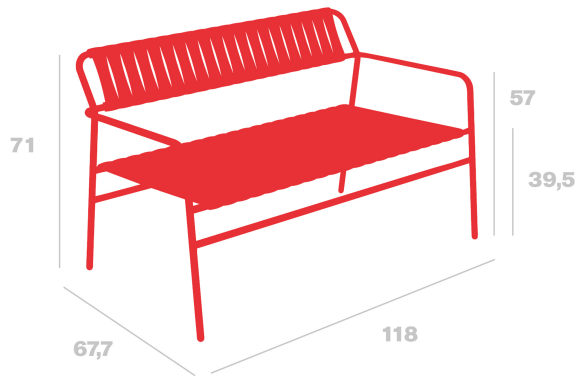


## Technical specifications

# Gelato Bench

By **Benedetta Tagliabue and Joana Bover**



**Bench with arms for indoor and outdoor use. Steel structure and slats made of recycled polypropylene reinforced with fiberglass. Available in solid color, color combinations and slat compositions.**

### Measures

**W 118cm x L 67.7cm x H 71cm x Hs 39.6cm x Ha 57cm**

**W 46.46in x L 26.65in x H 27.95in x Hs 15.59in x Ha 22.44in**

### Weight

**14 Kg**

**30.86 lb**

### Certificates

**ANSI2**

**UNEEN581-1**

## Logistical information

Units	Packaging (cm)	Packaging (in)	m <sup>3</sup>	ft <sup>3</sup>	Peso Br. (kg)	Gross We. (lb)
1X	120 x 80 x 120	47.24 x 31.5 x 47.24	1.152	40.68	14.7	32.41

## Sustainable Production - Environmental Commitment

Resol invests money and resources in research and the search for more sustainable processes.

All Resol products are produced with responsible use of water.

Under no circumstances are hazardous chemicals used during production.

At Resol, all waste is managed in a sustainable and responsible manner.

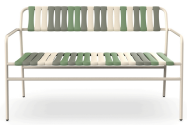


# RESOL

# Gelato Bench

By Benedetta Tagliabue and Joana Bover

## Variants



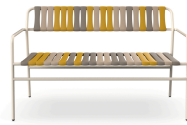
**Gelato Bench Pistacchio Nacar**  
06930



**Gelato Bench Amarena Nacar**  
06931



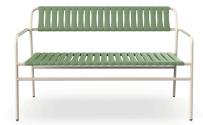
**Gelato Bench Toroncino Nacar**  
06932



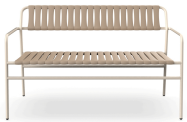
**Gelato Bench Nocciola Nacar**  
06933



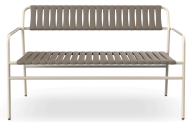
**Gelato Bench Nacar + Slats Salvia**  
06963



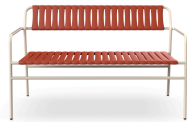
**Gelato Bench Nacar + Slats Olivo**  
06964



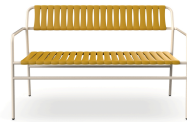
**Gelato Bench Nacar + Slats Duna**  
06965



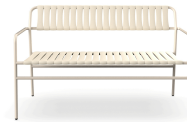
**Gelato Bench Nacar + Slats Trufa**  
06966



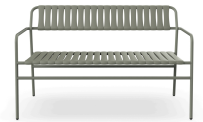
**Gelato Bench Nacar + Slats Greda**  
06967



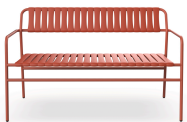
**Gelato Bench Nacar + Slats Albero**  
06968



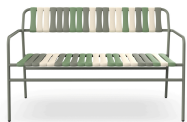
**Gelato Bench Nacar Slats**  
06981



**Gelato Bench Salvia Slats**  
06982



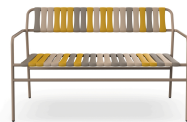
**Gelato Bench Greda Slats**  
06983



**Gelato Bench Pistacchio Salvia**  
07287



**Gelato Bench Amarena Greda**  
07288



**Gelato Bench Nocciola Duna**  
07289



**Gelato Bench Duna Slats**  
07294

## Sustainable Production - Environmental Commitment

Resol invests money and resources in research and the search for more sustainable processes.

All Resol products are produced with responsible use of water.

Under no circumstances are hazardous chemicals used during production.

At Resol, all waste is managed in a sustainable and responsible manner.



# RESOL